



**PARTICLE
MEASURING
SYSTEMS®**

a spectris company

Without measurement there is no control®

MiniCapt® Mobile Microbial Air Sampler

*Configurations & Spare Parts
with Part Numbers*



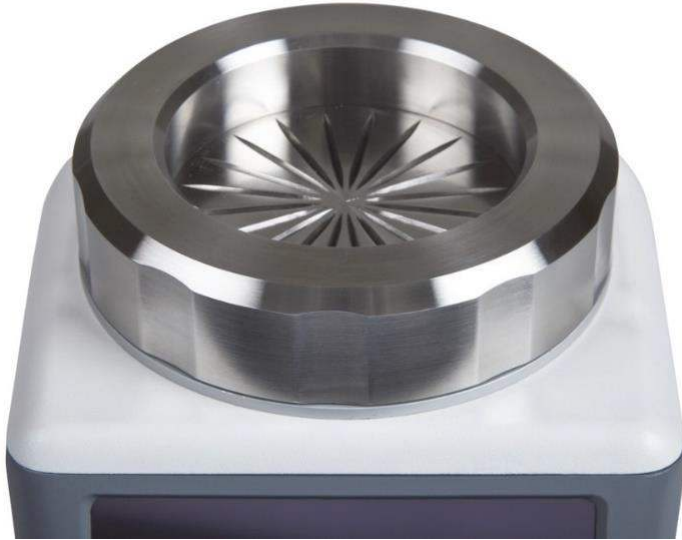


MiniCapt Mobile Microbial Air Sampler
models and part numbers:

25 LPM	PN 790045-0025
50 LPM	PN 790045-0050
100 LPM	PN 790045-0100
EL	PN 790044-0100
MCM with head for 6-9mm plates (100 LPM only)	PN 790045-0101

The Anti Microbial Housing MCM is in effect as of January 26, 2021

Head Impactor Models



Additional Impactor head SS 316L
with 20 precision-cut slides:
models and part numbers:

25/50 LPM PN 1000019036

100 LPM PN 1000019035

For use with 6-9 mm high agar plates

25/50 LPM PN 1000023229

100 LPM PN 1000023228

Adaptor for Rapid Micro Biosystems Plates



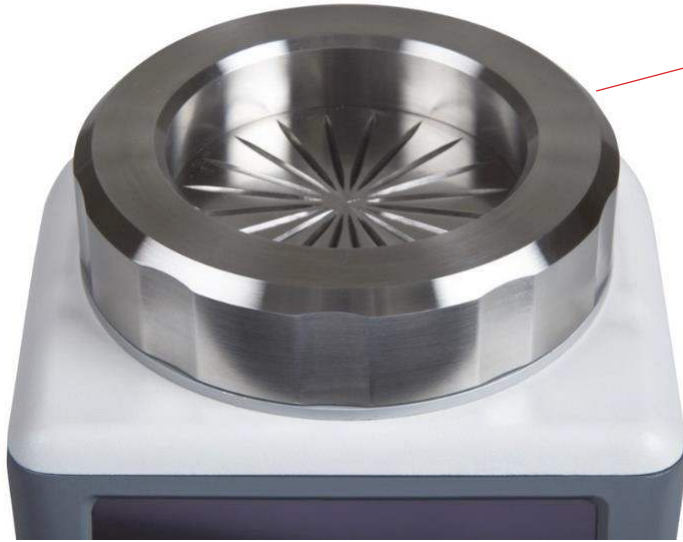
This adaptor has been created **ONLY** for customer which implemented or are going to implement Growth Direct® plate of Rapid Micro Biosystem and they have or want to buy our MCM or Biocapt. The kit contains: 1 head modified compatible with GD plate and 4 rest-buttons

25/50 LPM PN 1000025765

100 LPM PN 1000027731

Growth Direct® Plate

Remote Sampling



1

Remove the impactor head



2

Replace the impactor head with the remote sampling top.

25/50 LPM PN 1000021673

100 LPM PN 1000021905



PN 90790048

Spare Components for the 100 LPM Remote Sampling Assembly



100 LPM 3/4" Silicone Tubing PN 1000027230

100 LPM PN 1000021905

Adjustable Head



hose barb



mushroom

25/50 LPM

Four configurations are available:

- hose barb PN 790018-0000
- 3/4" hose barb PN 790018-0005
- lateral 3/4" TC PN 790018-0010
- mushroom 3/4" TC PN 790018-0020

(see config sheet)

100 LPM

Three configurations are available:

- hose barb PN 790018-0105
- lateral 3/4" TC PN 790018-0110
- mushroom 3/4" TC PN 790018-0120

(see config sheet)

Other Lightweight BioCapt Stainless Steel Atrium – Non-Adjustable



hose barb



mushroom



side mount

25/50 LPM

Three configurations are available:

- side barb PN 790017-0010
- side mount PN 790017-0000
- mushroom PN 790017-0020

100 LPM

Three configurations are available:

- side barb PN 790017-0210
- side mount PN 790017-0200
- mushroom PN 790017-0220



Spare BioCapt Light Weight head Top

PN 1000014957 25/50 LPM

PN 1000025674 100 LPM



Pin Set #0 PN 1000014968 86.7 D x 3.8 H mm
(installed in each unit)

Pin Set #1 PN 1000014958 87.5 D x 3.8 H mm

Pin Set #2 PN 1000014959 87.5 D x 5.3 H mm
(supplied each unit)

Pin Set #3 PN 1000014960 88.7 D x 4.8 H mm

Pin Set #4 PN 1000014961 88.7 D x 3.8 H mm

Pin Set #5 PN 1000014962 88.6 D x 3.8 H mm

Pin Set #6 PN 1000014963 87.1 D x 5.2 H mm

Pin Set #7 PN 1000014964 87.1 D x 5.0 H mm

Pin Set #8 PN 1000014965 88.7 D x 5.5 H mm
(supplied each unit)

Pin Set #9 PN 1000014966 88.1 D x 5.8 H mm

Pin Set #10 PN 1000014967 88.1 D x 4.0 H mm

Pin Set #12 PN 1000015744 91.4 D x 6.0 H mm



Black O-Ring

PN 1000015025

BioCapt SS Head Remote



3/4" Tri-Clamp Fitting, Mushroom Outlet
PN 790018-0020

3/4" Tri-Clamp Clamp
PN 90790058



3/4" Tri-Clamp PTFE Gasket
PN 90790059



BioCapt Single-Use Mushroom Cap Adaptor



PN 90790063



Remote Sampling Using the BioCapt Single-Use Microbial Impactor

The remote head of the BioCapt Single-Use must be connected to the air sampler/MiniCapt mobile sampler at 25-50 LPM.

For the BCSU 100 please refer to the configuration sheet on page 11.

BCSU-TSA PN 79001201

BCSU-TSA w/ Neutralizers PN 79001209

BCSU-TSA w/Neutralizer and Lactamator
PN 79001409

BCSU-SDA PN 79001409

BCSU-100 LPM PN 7900240921



(see available agar types on the Configuration Sheet)



Mushroom adaptor PN 90790063

Flat bracket lid PN 90790048

Tri Clam PN 90790058

Gasket PN 90790059



**This kit can only be used with BCSU 25/50LPM.*

For the BCSU 100 please refer to the configuration sheet on page 11.

MiniCapt Mobile Remote Sampling using BioCapt Single-Use Microbial Impactor 25-50 lpm:
Need one complete set of connection items



Alternative 1
Remote sampling with BCSU flat adaptor

Alternative 2
Remote sampling without adaptor

MiniCapt 25/50 LPM

MiniCapt 25/50 LPM

KIT	PN 90790053
lid	PN 1000021673
1/2" hose	PN 1000027229
adaptor	PN 90790062
gasket	PN 90790059
tri-clamp	PN 90790058
barb	PN 90790056

hose	PN 1000021274
lid	PN 1000021673

NOTE: for BCSU 100 PN 7900240921 please refer to the configuration on page 11.

How to connect BCSU 100 LPM to MCM or MCR



- Remote Flat Lid** PN 90790048
- Flat Adaptor** PN 90790062
- (1) Gasket** PN 90790059
- (1) Tri-clamp** PN 90790058
- BCSU 100** PN 7900240921



- Remote Flat Lid** PN 90790048
- 100 LPM Tubing** PN 1000027230
- (2) 3/4" Barb** PN 90790057
- Flat Adaptor** PN 90790062
- (2) Gasket** PN 90790059
- (2) Tri-Clamp** PN 90790058
- BCSU 100** PN 7900240921



- Remote Lid 100 LPM** PN 100021905
- 100 LPM Tubing** PN 100027230
- 3/4" Barb** PN 90790057
- Flat Adaptor** PN 90790062
- Gasket** PN 90790059
- Tri-Clamp** PN 90790058
- BCSU 100** PN 7900240921



- Remote Lid 100 LPM** PN 100021905
- 100 LPM Tubing** PN 1000027230
- 3/4" Barb** PN 90790057
- Flat Adaptor** PN 90790062
- Gasket** PN 90790059
- Tri-Clamp** PN 90790058
- BCSU Mushroom Adaptor** PN 90790063
- BCSU 100** PN 7900240921

BioCapt® Single-Use: Alternative 1



BCSU Flat Adaptor PN 90790062



Elbow Adaptor PN 90790060

KIT

PN 90790060

BCSU flat adaptor	PN 90790062
3/4" tri-clamp	PN 90790058
3/4" tri-clamp gasket	PN 90790059
elbow	PN 100022100

Compressed Gas Kit



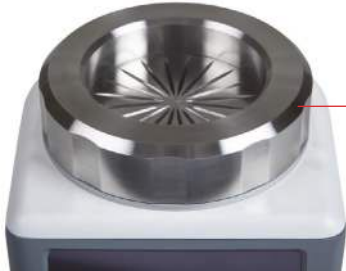
50 LPM PN 90790050
100 LPM PN 90790051
25 LPM PN 90790052

CG Tubing 1000021187
Sold by the foot

Compressed Gas Filter Exhaust (Zero Filter)
Clean, not sterile PN FL37



Compressed Gas Kit - PN 90790050 / 51 / 52



1

Remove the sampler head



2

Mate dual impactor to CG head



3

Install dish

Dual Connection BioCapt Impactor
(spare) 25/50 LPM PN 1000021247

(spare) 100 LPM PN 1000021248

For use with 6-9 mm high agar plates

25/50 LPM PN 1000023227

100 LPM PN 1000023552

Gas line inlet



4

Mate impactor/CG assembly to unit

Compressed Gas Filter exhaust

(Zero Filter): PN FL37

Tubing PN 1000021187

ISP Kit



25 LPM	PN 90790045
50 LPM	PN 90790046
100 LPM	PN 90790047

ISP Kit Components: 25, 50, or 100 LPM



Components for Isolator



Isolator Stand 25/50 LPM PN 90790043

Isolator Stand 100 LPM PN 90790044

Connecting the 25, 50, or 100 LPM Unit



3/4" Tri-Clamp PTFE Gasket PN 90790059



3/4" Tri-Clamp Clamp PN 90790058

25/50 LPM 1/2" Barb Fitting to 3/4" Tri-Clamp Fitting
PN 90790056

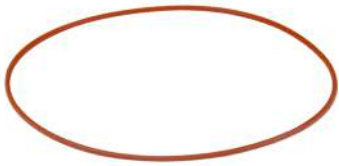
100 LPM 3/4" Barb Fitting to 3/4" Tri-Clamp Fitting
PN 90790057



25/50 LPM 1/2" Silicone Tubing
PN 1000027229

100 LPM 3/4" Silicone Tubing
PN 1000027230

Optional Parts



O-Ring

PN 1000021241



Exhaust Port

PN 1000019071



Cover Plate

PN 1000019051

Alternative but not autoclavable tubing

25/50 LPM 1/2" Polyurethane Transparent Tubing

PN 1000009341

100 LPM 3/4" polyurethane Transparent Tubing

PN 1000012960



Battery
PN 1000019006



Power Supply
PN 1000019008



Power Cord
N. America, Taiwan, Phillipines
PN CD02



Power Cord
China
PN 1000017377



Power Cord *Japan*
PN 1000021015



Power Cord *UK*
PN 1000025352



Power Cord *Euro*
PN 1000016963



Carrying Case

PN 1000021319



Minicapt, Printer Refurbished

PN 1000025555

(only printer refurbished)

Minicapt, Printer Kit, Refurbished

PN 90790070

(included: printer refurbished, USB cable,
Power cable)



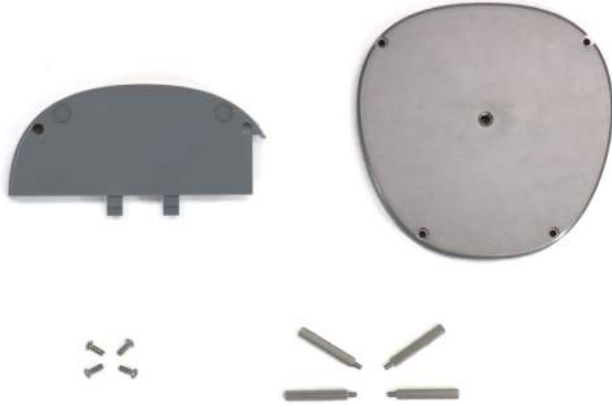
Paper

PN 1000000975



Barcode Reader

PN 90790071

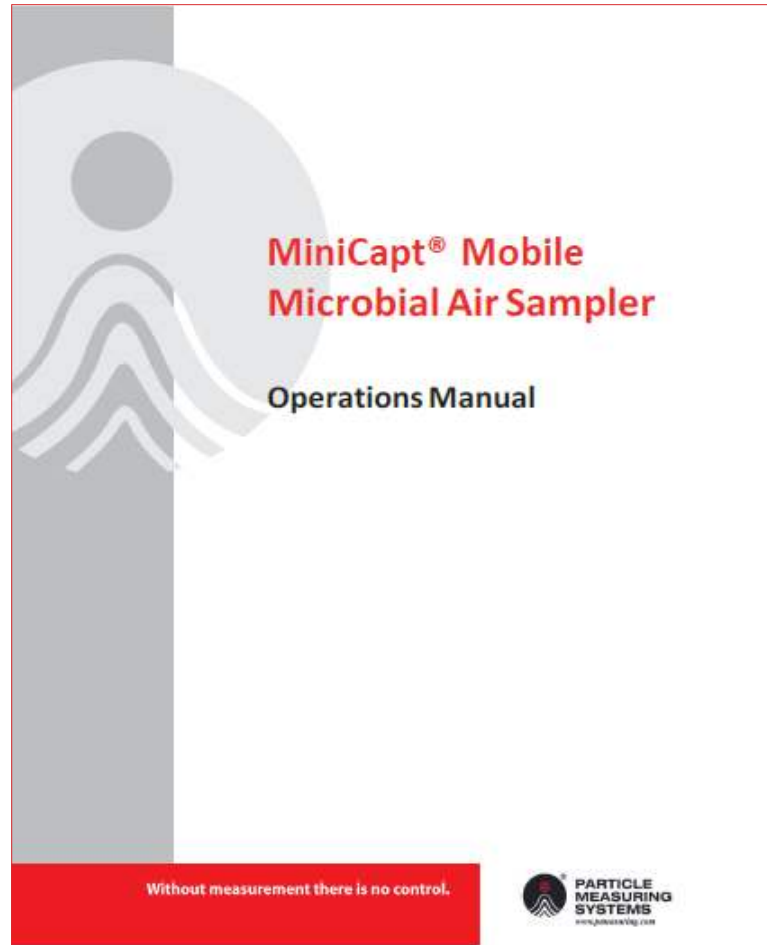


MiniCapt Mobile Mounting Base
PN 90790072



Tripod PN MI008 MI

MiniCapt Mobile Operations Manual



PN 1000020872

Includes instructions for the Compressed Gas Kit

MiniCapt Mobile SOP Template **PN 1000026881**

MiniCapt IQOQ



Product		Part No.	1 Order	2 or more orders
MiniCapt Mobile IQOQ Validation Protocol	MNL, MiniCapt Mobile and Accessories, IQOQ, Security Paper KK15A2VBL	1000021474	x	
		1000024271		X Authorized Copy
MiniCapt EL IQOQ Validation Protocol	MNL, IQOQ, MiniCapt EL, Security Paper KK15A2VBL	1000024597	x	
		1000024272		X Authorized Copy
BCSU Validation Binder	MNL, Validation Manual, BioCapt Single Use, Security Paper KK15A2VBL	90790064	x	

For pricing refer to your local list price

Includes information on accessories and kits