

*Without measurement there is no control*

# Facility Net

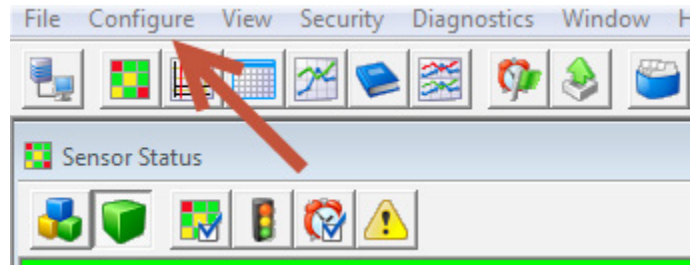
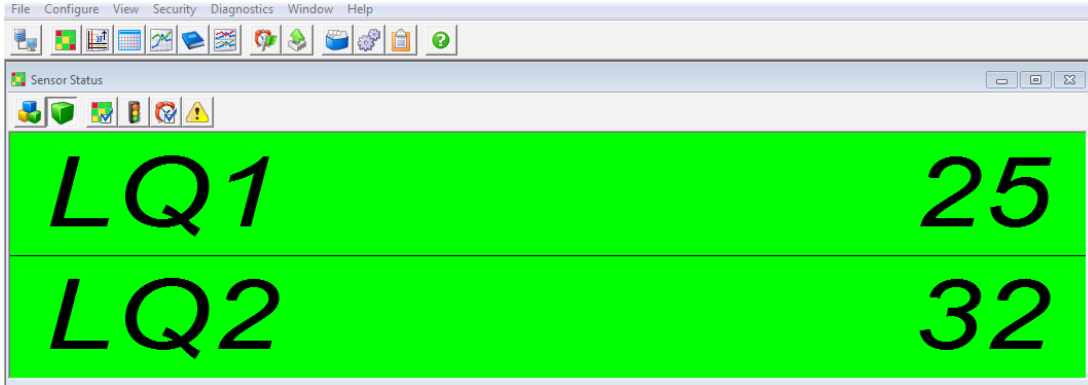
Adding a Virtual Point for LiQuilaz



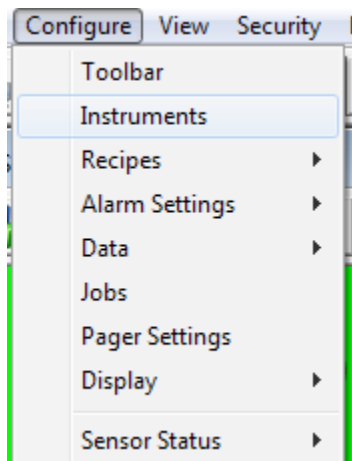
**QUICK GUIDE**

## How Do I Add a Virtual Point to Show DC Light?

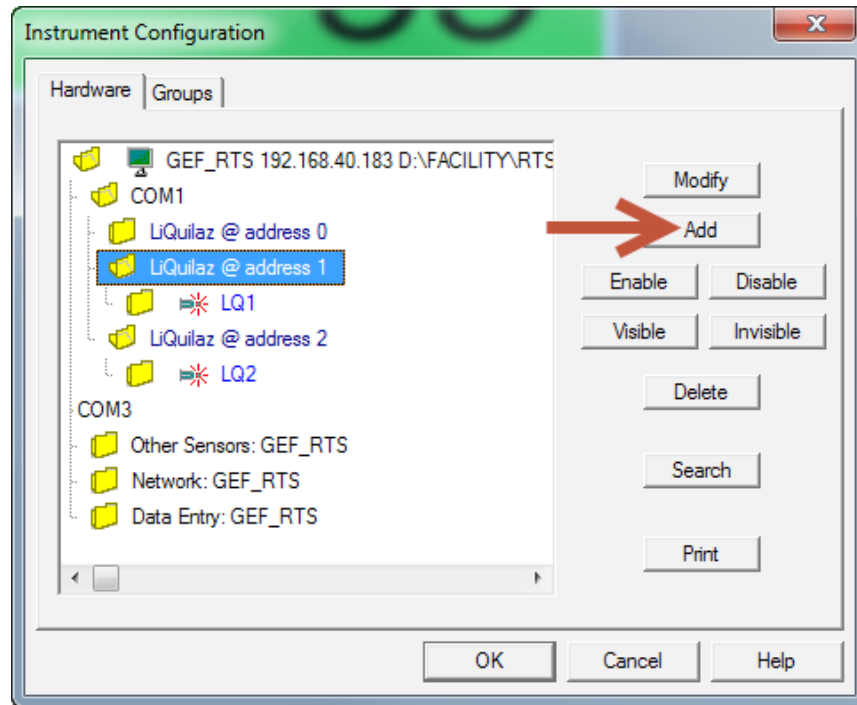
1. On the top menu bar, select **Configure**.



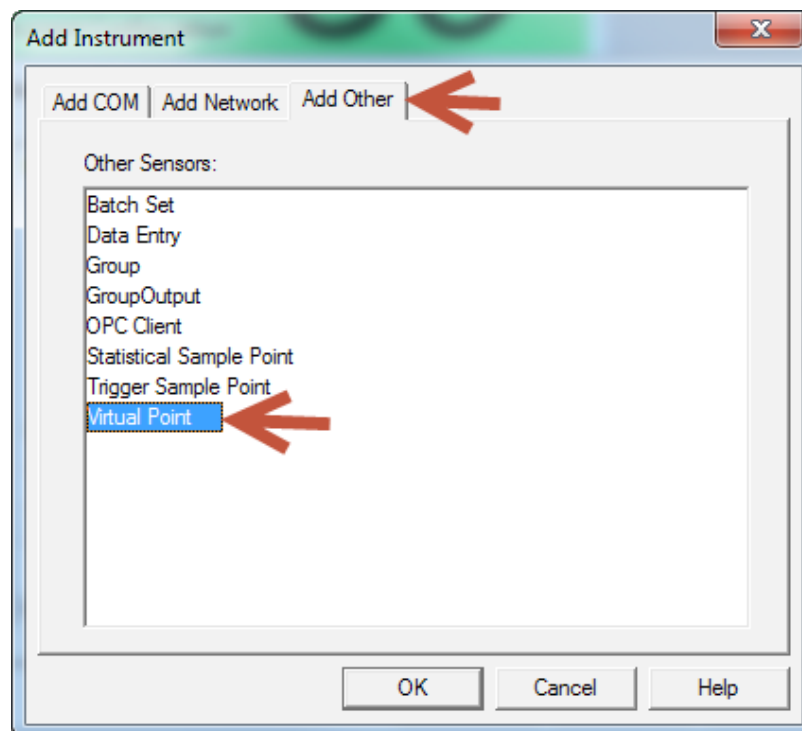
2. From the drop down menu, select **Instruments**.



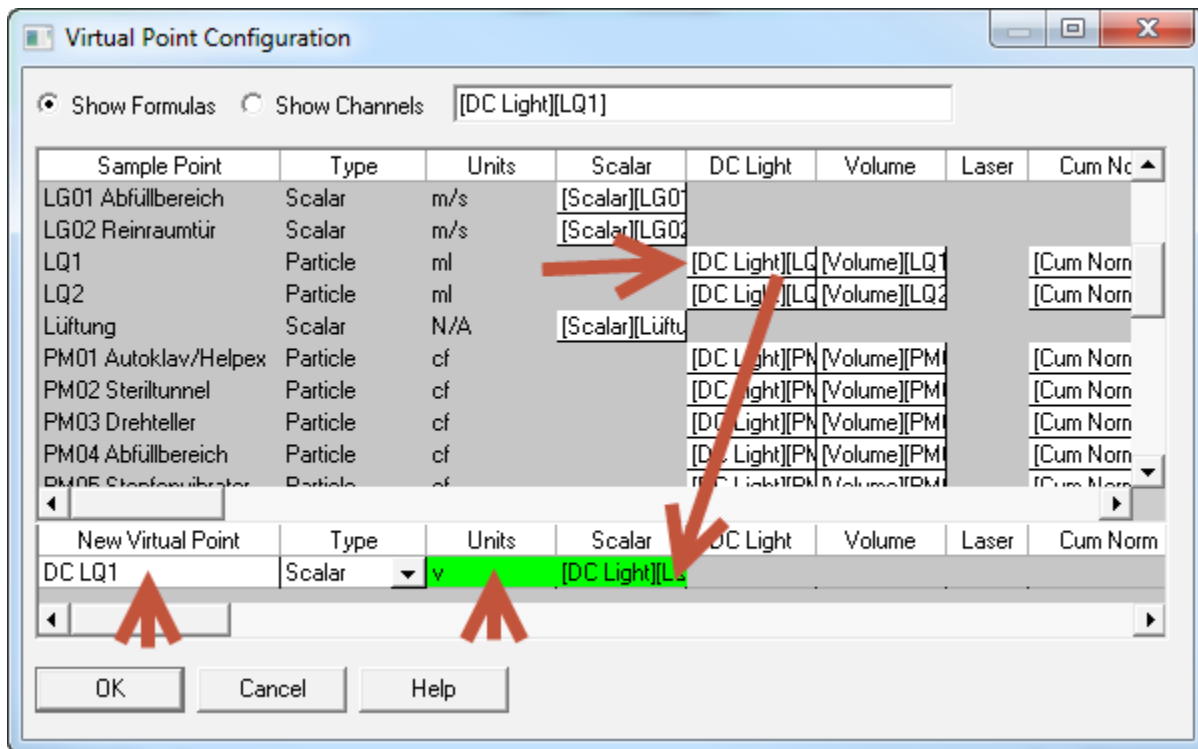
3. In the **Hardware** tab of the resulting **Instrument Configuration** window, click **Add**.



4. In the **Add Other** tab of the resulting **Add Instrument** window, select **Virtual Point**.



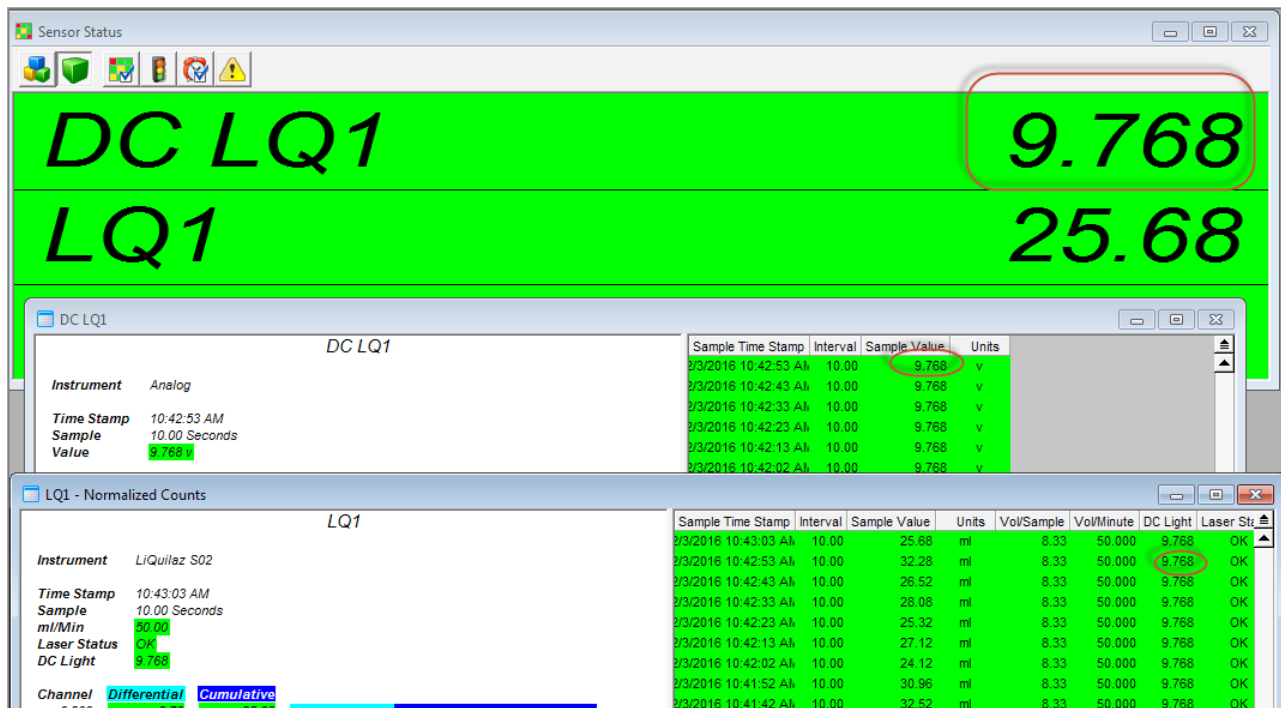
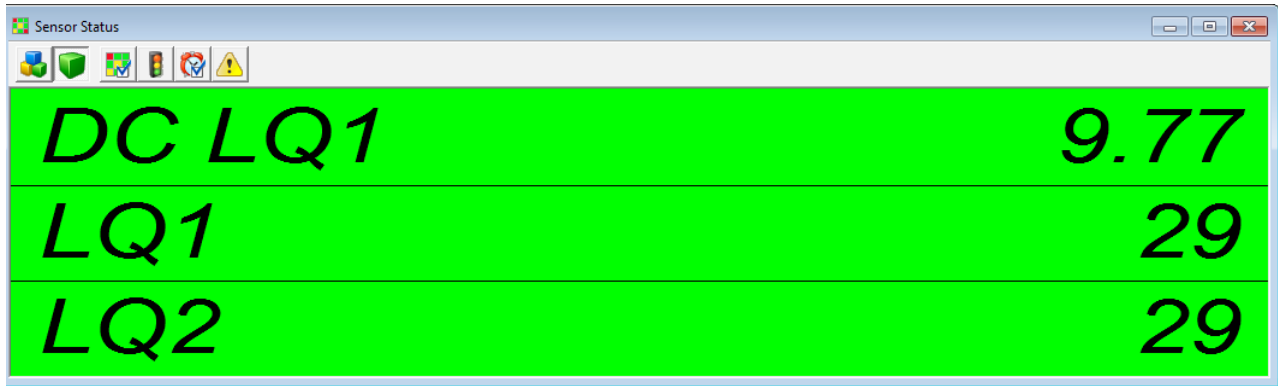
5. Define the following attributes of the virtual point in the **Virtual Point Configuration** window:
  - a. In the **New Virtual Point** column, type a name.
  - b. In the **Units** column, select the desired units.
  - c. From the **DC Light** column, select the DC light cell for the appropriate sensor, and drag it to the **Scalar** field.



6. Press **OK** to finish.

The new virtual point is treated like a new sensor and added to your **Sensor Status** screen.

**Note:** The virtual point will show up as a single-channel instrument, since it is a single calculation.



Thank you for reading this quick guide! Refer to the **Facility Net Operations Manual** for further information or contact your Particle Measuring Systems representative for any questions and support.