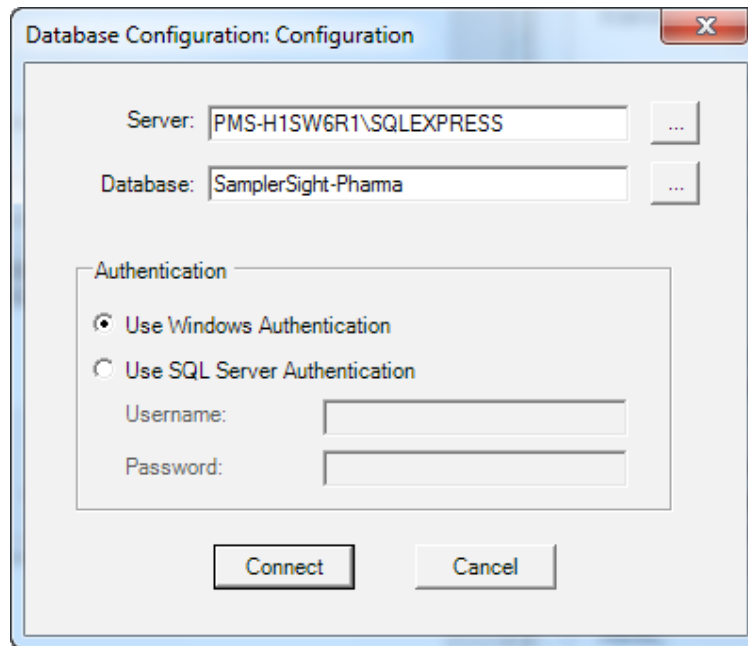
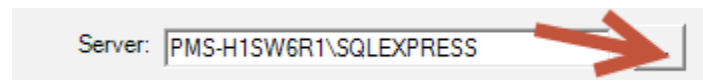


How to Use a Remote Database with SamplerSight

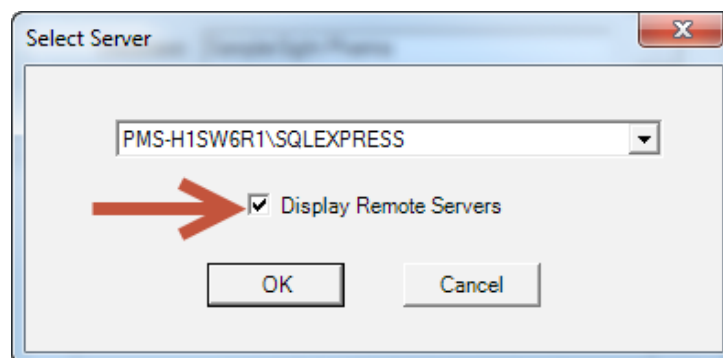
1. Ensure SQL and SamplerSight are already installed before starting this procedure.
2. After launching the SamplerSight software for the first time, a database window similar to the following will open:



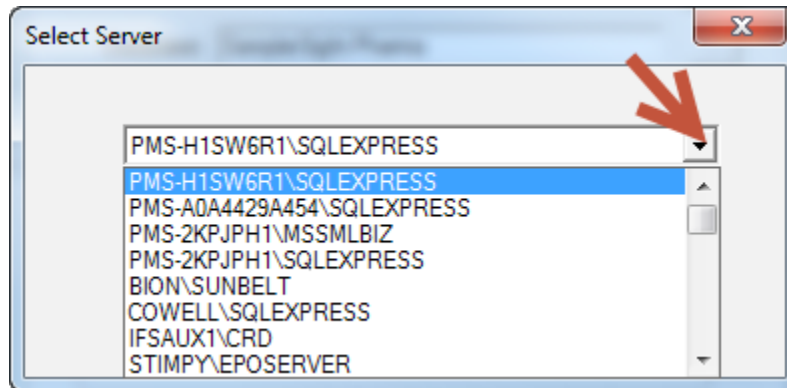
3. Click the ... button next to the **Server** field.



4. In the **Select Server** window:
 - a. Checkmark the **Display Remote Servers** box.

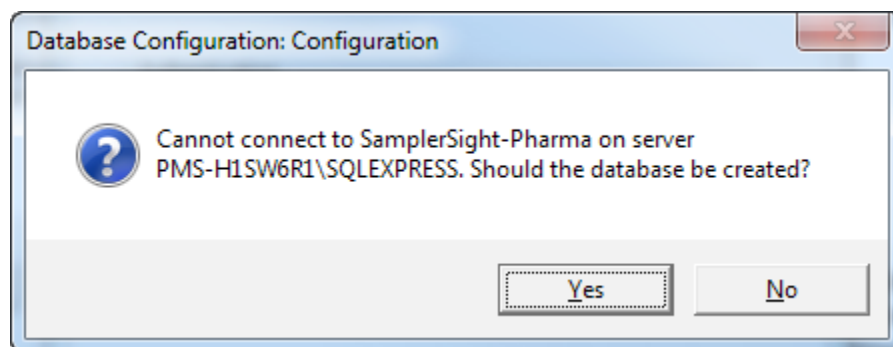


- b. Open the drop-down menu to display a list of available servers on the network.



Note: The server name consists of the computer name (1st part) and name of the SQL server (2nd part). SQLEXPRESS is the default server name used when installing the version of SQL that comes with SamplerSight.

5. Select the desired computer and server.
6. Type in the name of the desired database or click the button next to the database field to select an existing database if available.
7. Click **Connect**.
8. If the database does not already exist, you will be asked if you want to create it.



9. On the **Database Configuration: Configuration** window, click **Yes**.
10. Wait 1 minute to make sure the new database is created. Press **Connect**.
11. The software should now open. If there are any error messages, first verify the user logged into Windows has permissions on the SQL server.