

1. The first step would be to shutdown SamplerSight-Pharma if it is running. Make sure an administrator account is logged into Windows before continuing.

2. Start SQL server management studio.

If this is not already installed it will be available on the SamplerSight-Pharma install disk.

\\SqlExpressSP3\SQLServer2005_SSMSEE.msi

SQLServer2005_SSMSEE_x64.msi (for 64 bit Windows 7)

For 4.1 SP1

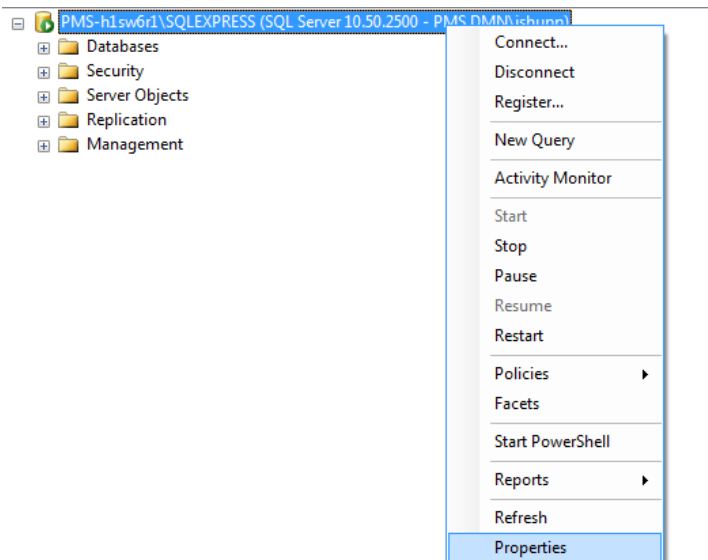
\\SQL Server 2008 R2 Express SP2\Management Studio\

SQLManagementStudio_x86_ENU.exe (For Windows 7)

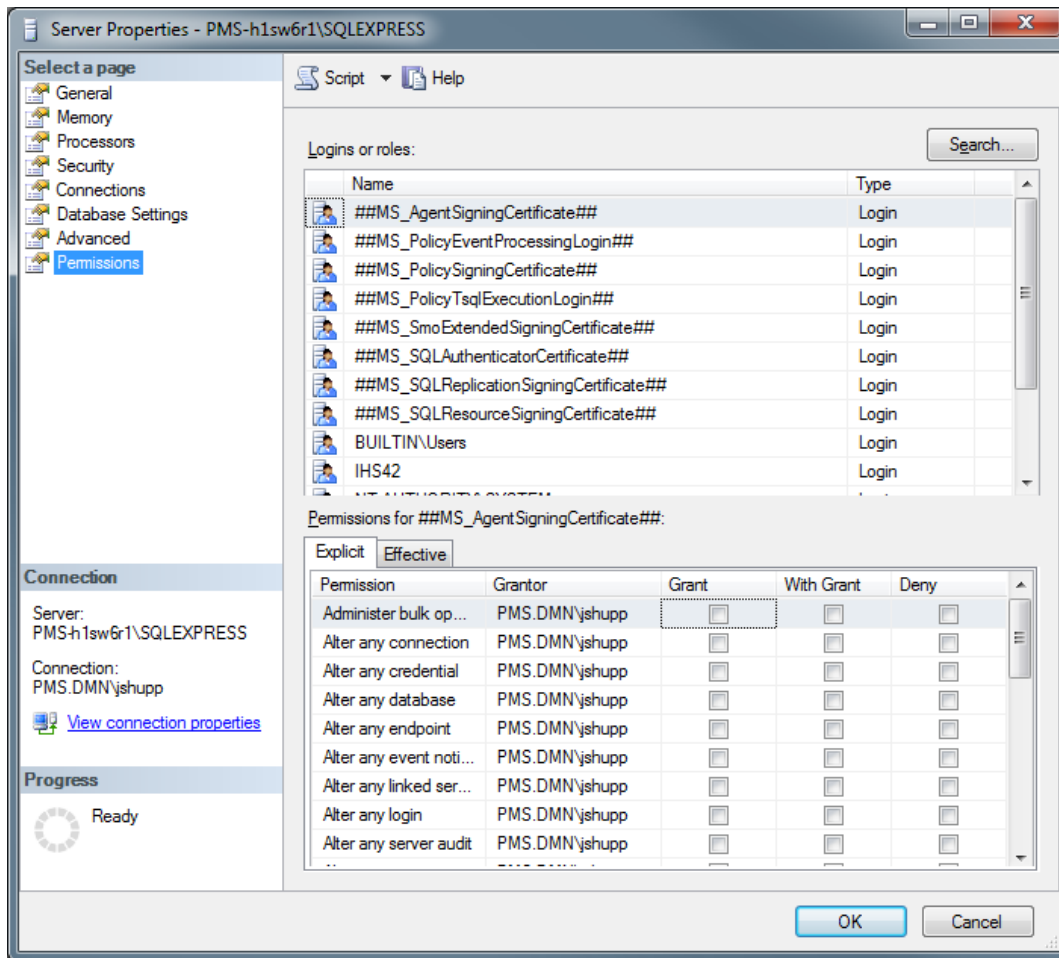
WindowsXP-KB926139-v2-x86-ENU.exe (For XP0)

3. Connect to the local server.

After starting management studio right-click on the server and choose properties.

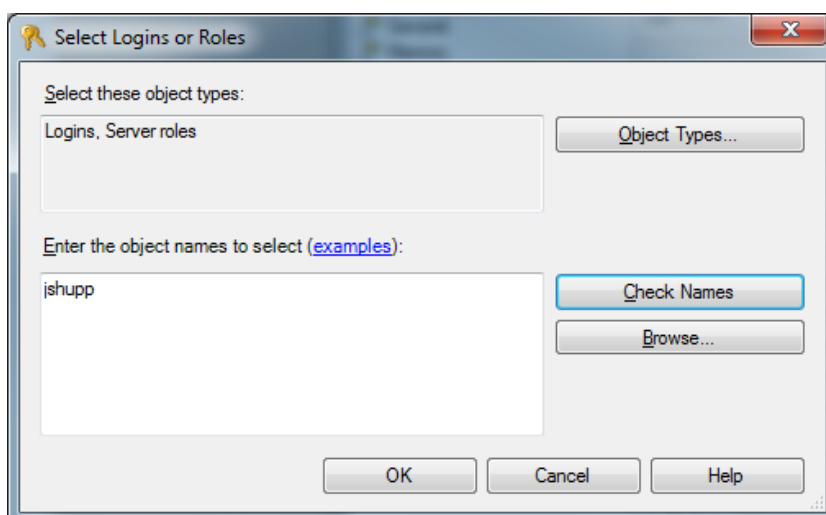


In the next dialog choose Permissions:

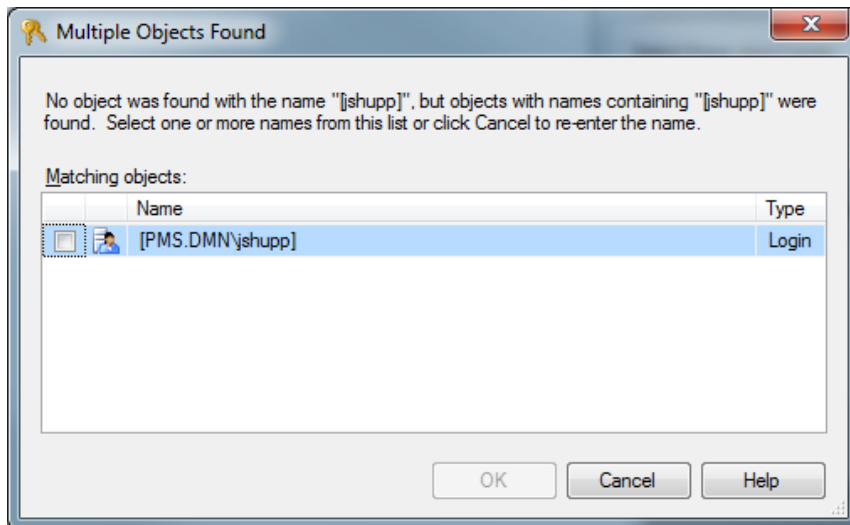


Press Search.

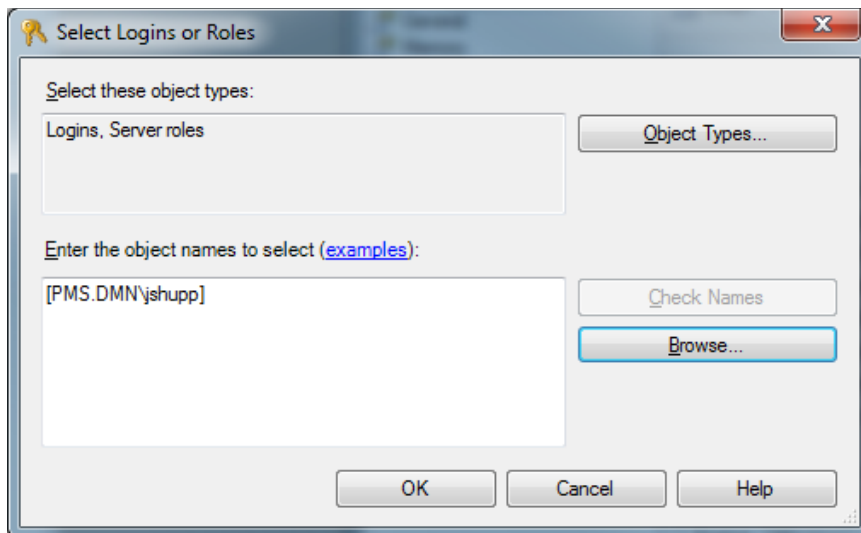
Enter the name of the user account being used to run the program.



Press Check Names

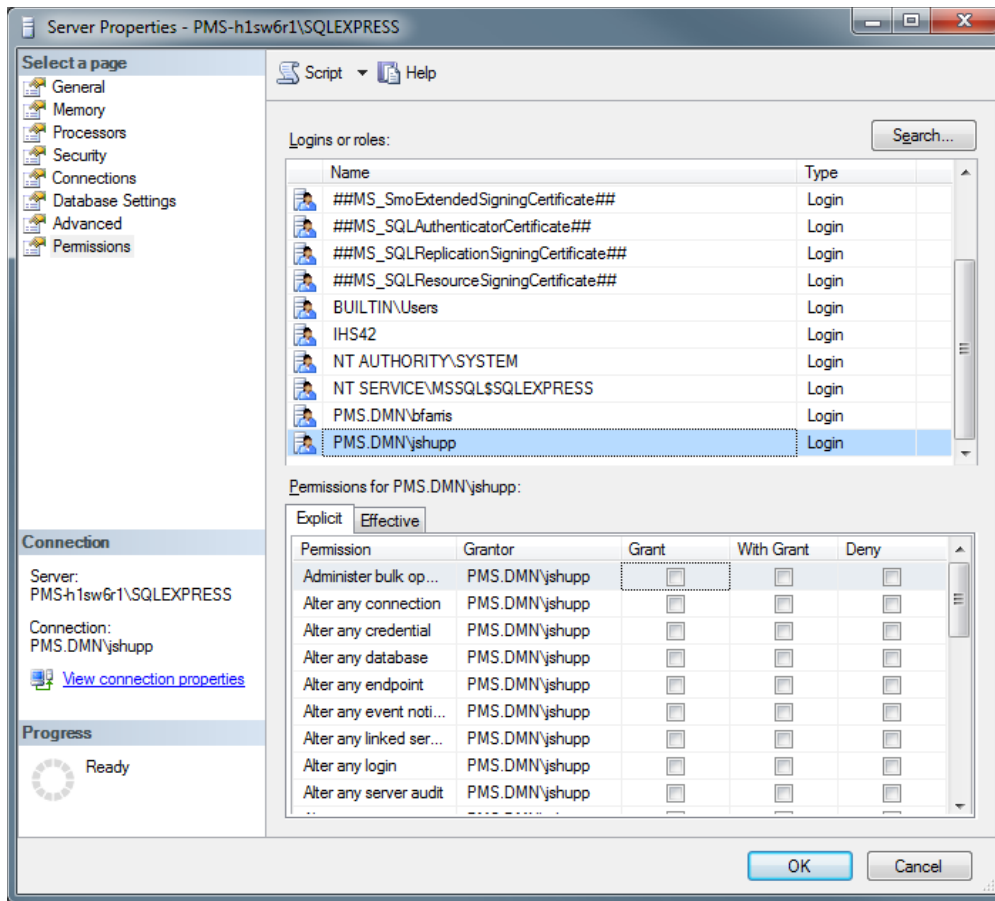


Select the user and press OK.



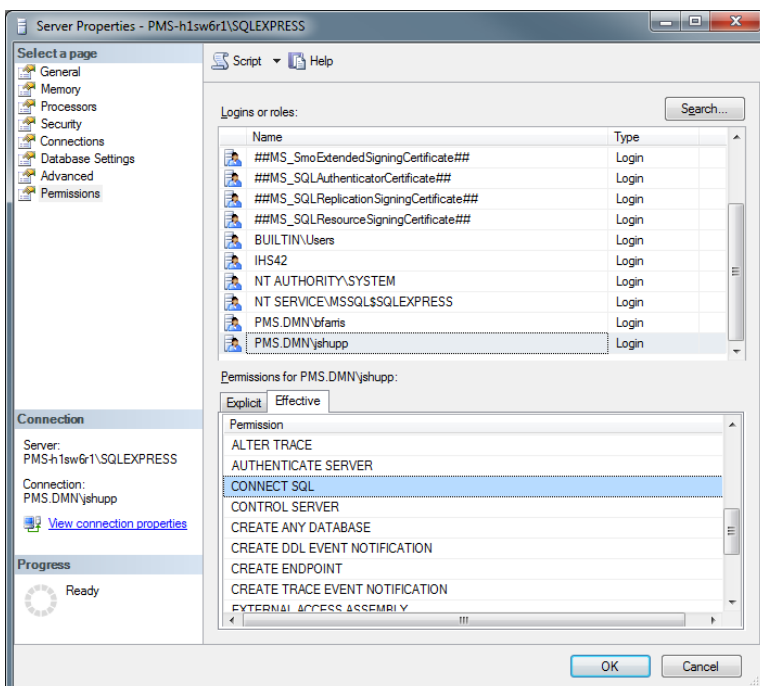
Press OK again.

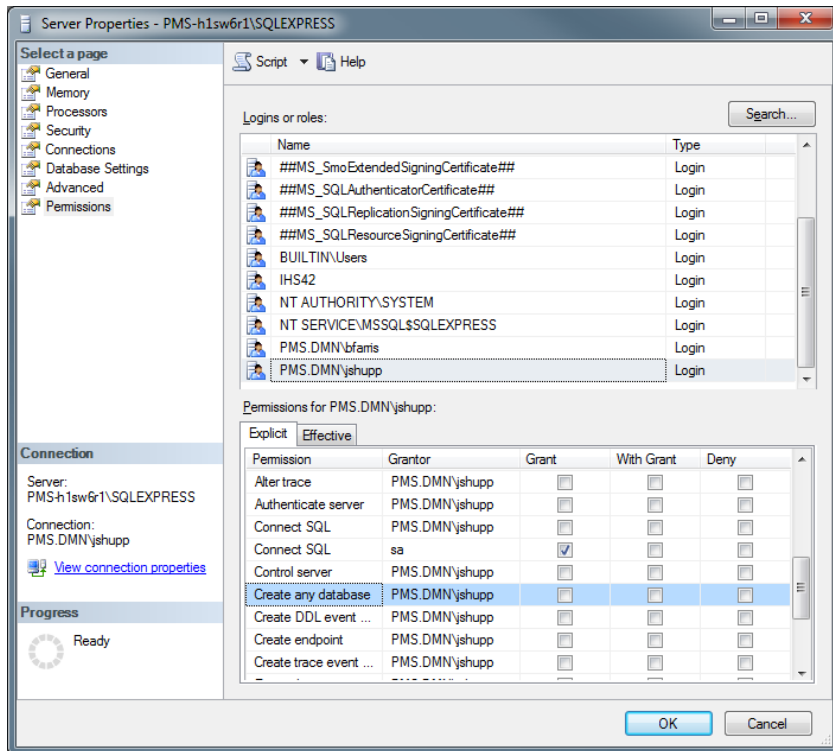
Find and select the user in the list.



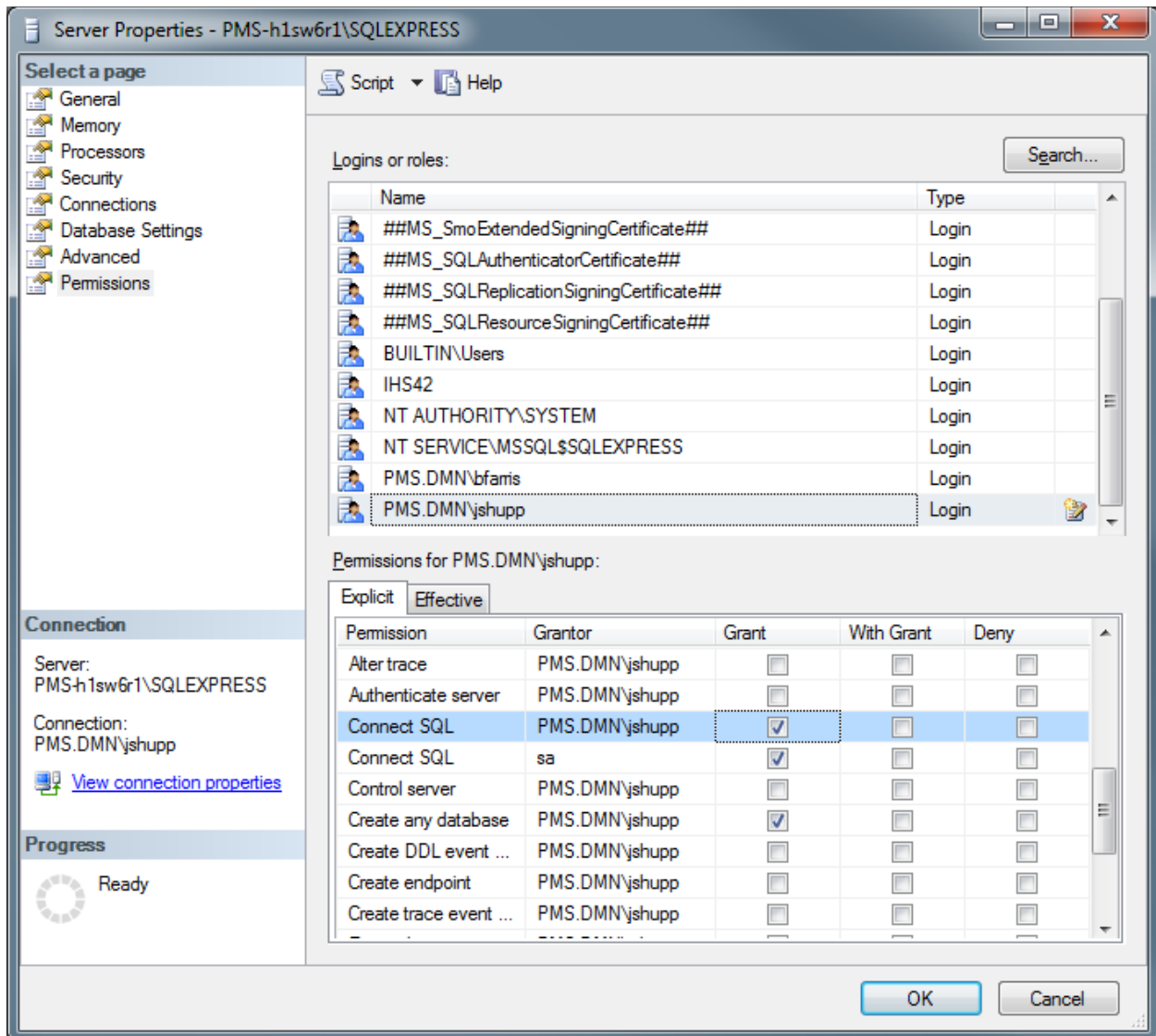
Choose the 'Effective' tab.

Verify the user has connect and create permissions.





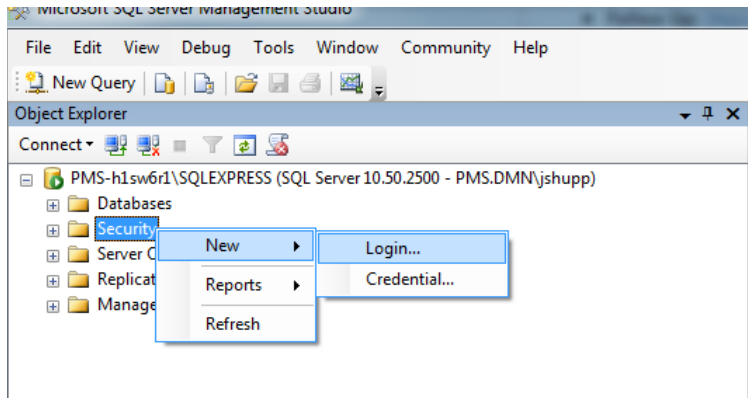
If the user does not have these permissions, grant them on the Explicit tab.



Press OK to save.

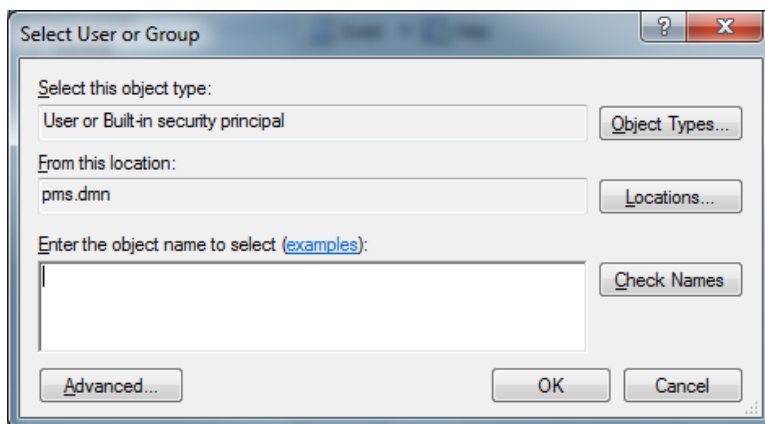
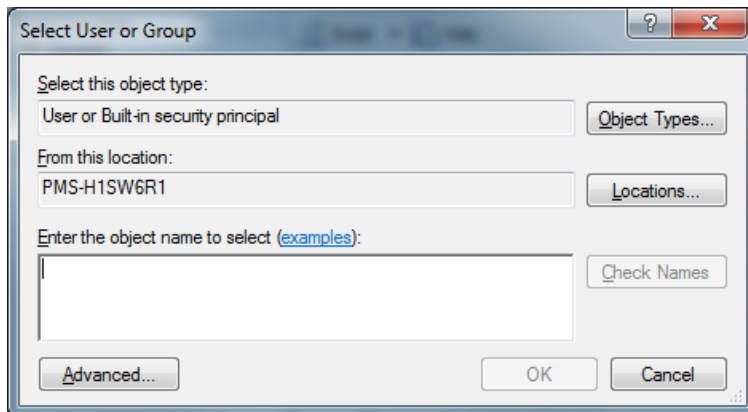
If the user account is not in the list and cannot be found, add it by going to the main menu.

Right click on the Security folder and choose New > Login



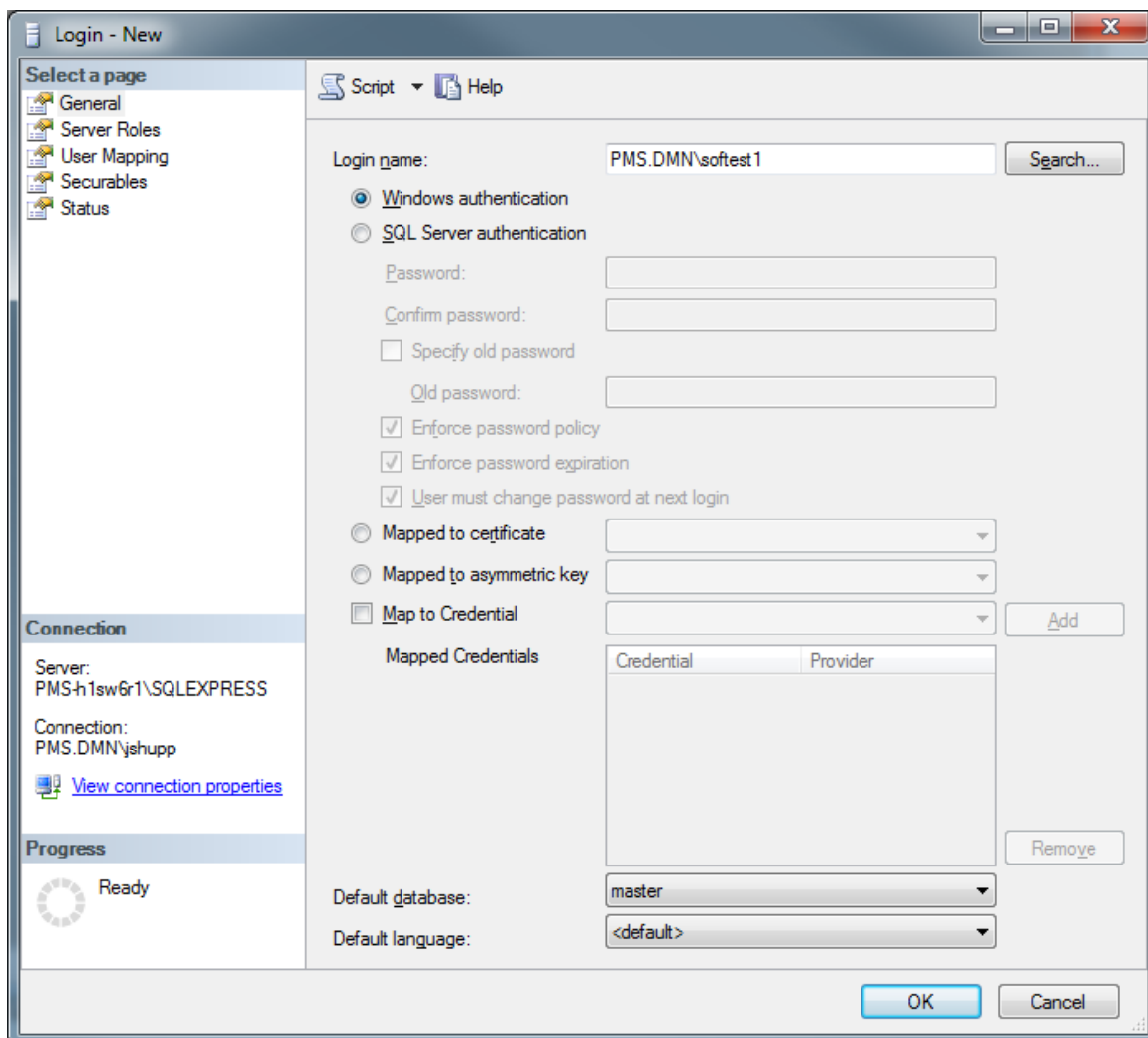
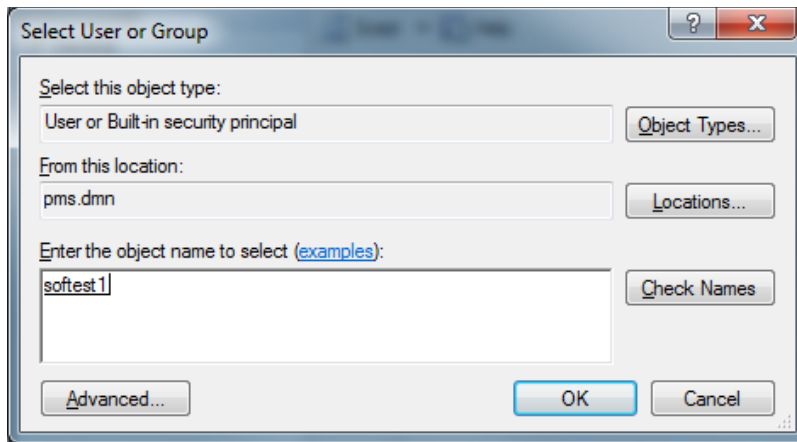
Press the Search button.

Make sure the location is the domain if using a domain account.

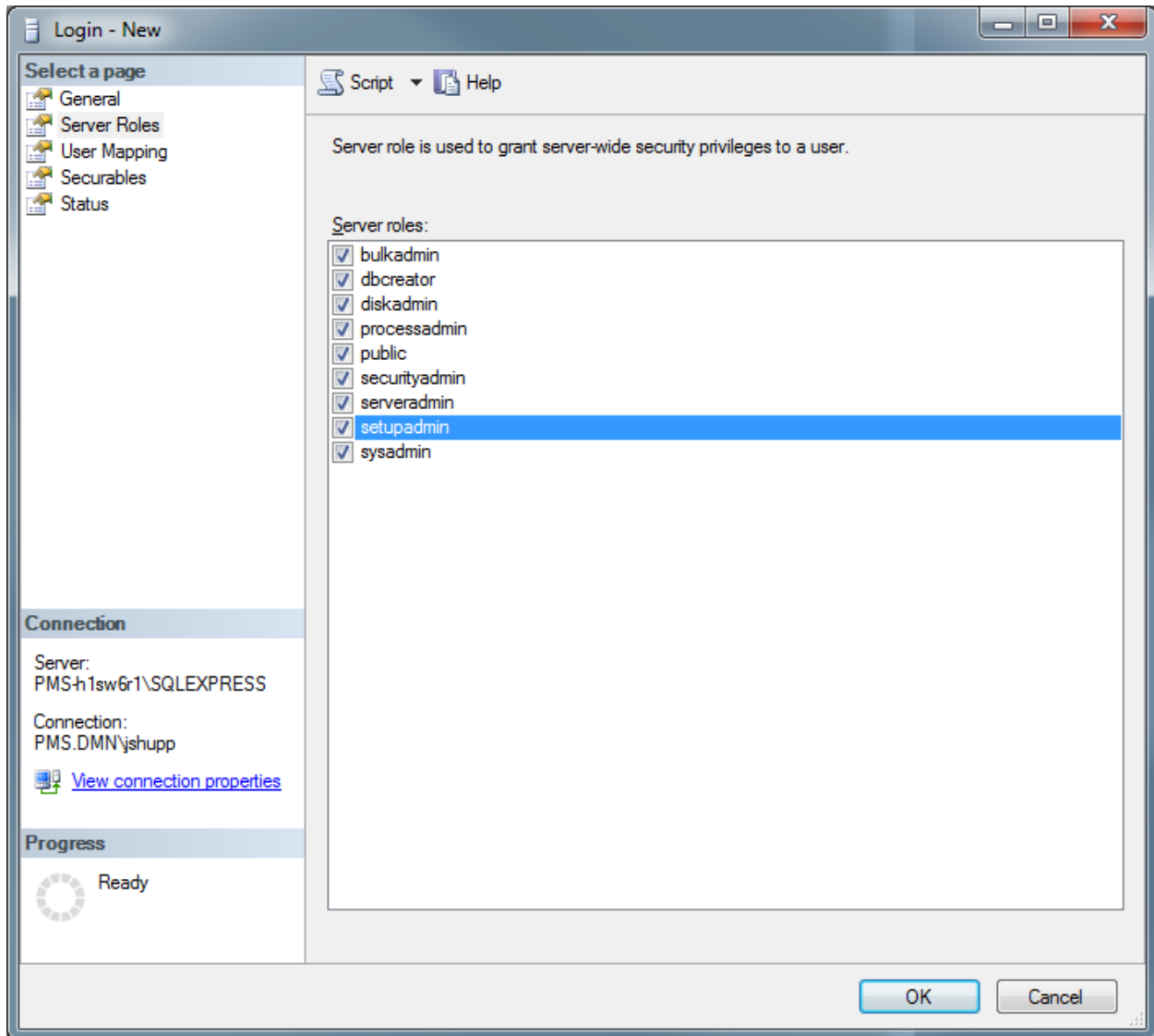


Type in the name of the account and press Check Names;

When it's found it will be underlined. Press ok to select and close the dialog.



Choose Server roles on the left and select the permissions on the screen.



Press OK to save.

You should now be able to create a new database and start the software.

You can also edit logins on a database level if the database is already created.