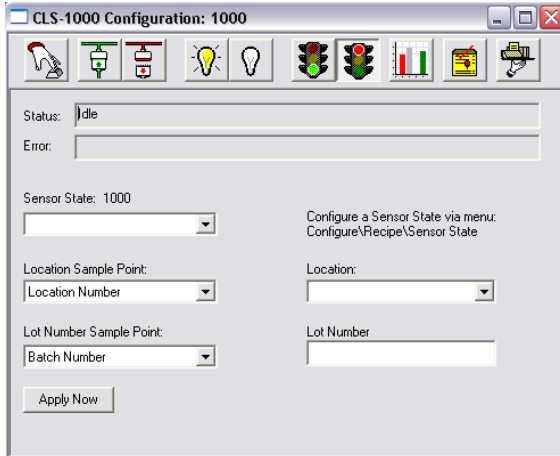


CLS Sampler Batch Sampling

A new feature added to the CLS Samplers with Recipes is the ability to select sensor states, locations and apply a lot number to each sample or series of samples. To do this, use the following steps:

- Access the Batch Configuration window of a sampler in the same fashion as accessing Runtime Config.



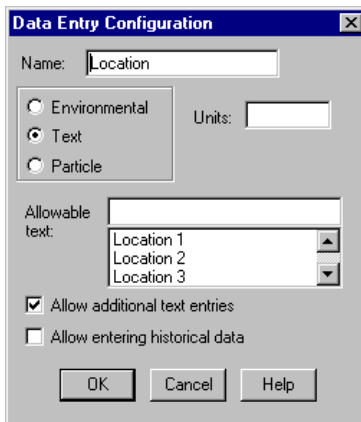
- Click on a Sampler CDP and Select Batch and confirm that the Batch Configuration dialog appears:

Notice that all of the Function Icon buttons are the same in this window as in the Runtime Config except that the Report Icon was added and instead of selecting the individual Sampler Parameters to change, you are allowed to select from a list of pre-configured Sensor States.

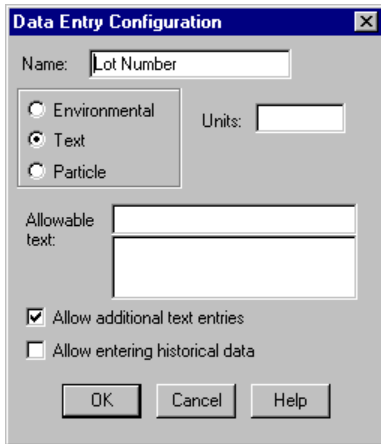


- Configure at least 2 Sensor States for the Sampler to be tested and verify that the Sensor States configured appear in the list when the Sensor State box is clicked. (The Batch Config window will have to be closed and re-opened to get the Sensor States to appear in the Box.)
- Verify that when a Sensor State is selected and Apply Now is pressed that the Sampler Parameters, in the Instrument Config Dialog are changed to reflect the Selected Sensor State.
- Verify that when Start is pressed the Sampler will operate according to the new parameters that were loaded by the Sensor State.

Location ID and Lot Number info are taken from Text type Data Entry Points. The examples below show the configuration of Data Entry Points for Location and for Lot Number.



This is an example of a Location Data point. Notice that there must be “Allowable Text Entries” entered for this to become a valid Data Entry Point for the Location Sample Point in Batch Configuration.

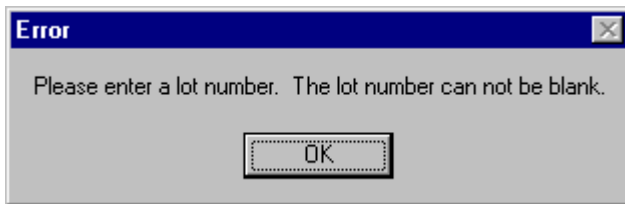


This is an example of a Lot Number Data Entry Point. Notice that there can not be any allowable text entries made and allow additional text entries must be checked or this will not show up in the Location ID list.

- Configure at least 2 each of the Data Entry Examples shown above and verify they are listed in the Batch Config where appropriate.
- Verify that all of the allowable text entries for each of the Location Sample Points selected are listed in the Location box to the right of the Location Sample ID.

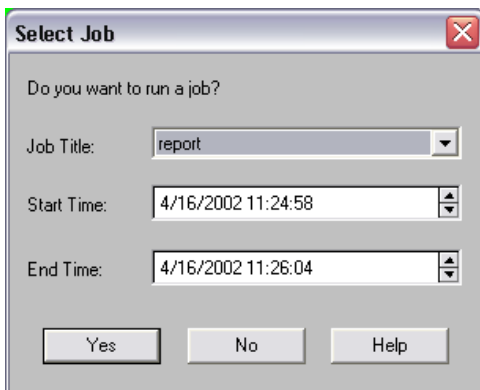


Verify that if a Location Sample Point is selected but a corresponding Location is not selected this message appears when the Apply Now button is pressed.



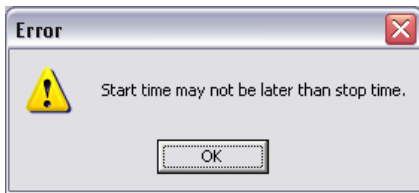
Verify that if a Lot Number Sample Point is selected but a corresponding Lot number is not entered this message appears.

- Verify that the Reset, Enable, Disable, Valid, Invalid, Start, Stop, Sizes and Maintenance buttons work exactly like the corresponding buttons in the Runtime Config.
- Configure a plot job and a Tabular Job for the CLS that is under test.

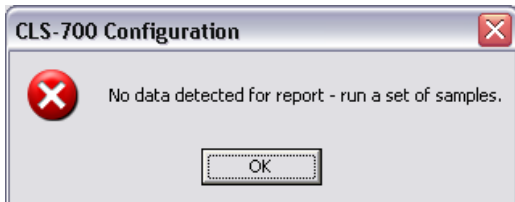


- From the Batch Sample window click on the Report Icon and verify that the “Select Job” dialog appears:

- Click on the Pull-down menu for Job Title and verify that all configured jobs are listed.
- Verify that the Start Time and Stop Time are defaulted to the correct duration of the batch of samples that was taken.
- Verify that the Start Time and Stop Time can be modified.
- Set the Start Time to a later Date/Time than the Stop Time, Click Yes and verify that the following message appears.



- Click OK and change the Start Time back to its default time and click Yes to verify that the correct job was run.
- Verify that clicking No on the Select Job window will close the window and no job is run.
- Click Help and verify that the Batch Job generator Help screen appears.
- Shutdown and Restart Facility Net, then open the Batch window and click on the Report Icon to verify that the following message appears.



- Click OK and Run some samples. Retry the Batch Report and verify that it works normally again.