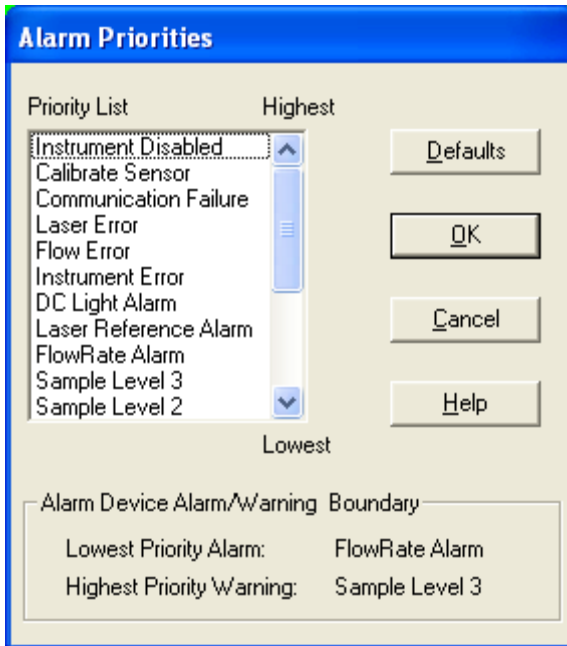


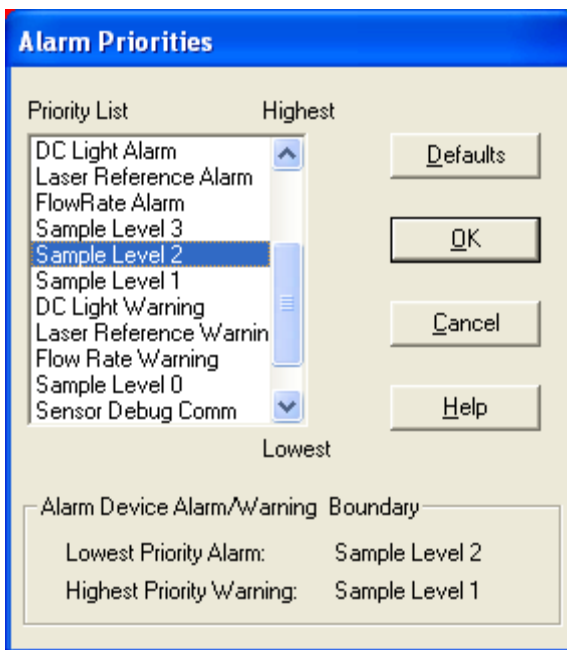
Setting Alarm Priorities

Go to the dialog below by clicking:



Configure > Alarm Settings > Alarm
Priorities

Notice that the Lowest Priority Alarm is FlowRate Alarm and the Highest Priority Warning is Sample Level 3. In this case all of the Sample Levels are Warnings.



By double clicking on Sample Level 2 you will then make the “boundary” move so that Sample Level 2 is now the Lowest Priority Alarm and Sample Level 1 is the Highest Priority Warning as shown below.